

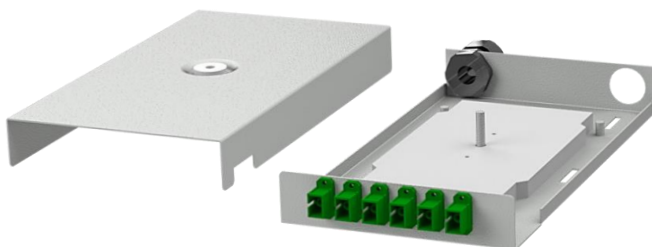


## FO Termination Box PK SC-V2 simplex series

The compact fiber optic termination box PK-V2 series is designed for wall mounting or installation in ODF cabinets and racks. It ensures the termination of fiber optic cables with low capacity in places with extremely limited space .



visualization of the closed FO termination box PK-V2 series



visualization of the open FO termination box PK-V2 series

### features:

- fiber optic box enables termination of up to 6 optical fibers,
- possibility of mounting connector standards: SC simplex, E2000 simplex, LC duplex,
- dedicated for installation in locations with extremely limited space available or where there is no requirements to install a standard patch panel,
- PG13.5 gland allows the termination of a line cable ( $\varnothing$  8-12 mm),
- well organized spare area of the termination box guarantees safe bending radius, thanks to integrated handles and perforations for cable ties,
- simple and solid construction closed with a knurled nut ensures fast and easy installation,
- Magnelis® sheet is the only metallic coating certified for use in a C5 environment, which provides durability and protection against corrosion.

### elements of equipment:

- cable ties,
- velcro tapes,
- 1x central strength member holder (FRP rod),
- 1x PG13.5 cable glands,
- 1x rubber grommets with membrane,
- fiber splice cassettes (acc. to configuration).

### standards and certificates:

- flammability class V0 acc. UL 94,
- PN-EN 60529 - ingress protection degree IP 41,
- PN-EN 62262 - impact protection degree IK 10,
- REACH Regulation No 1907/2006/EC,
- RoHS 2011/65/UE.

*The manufacturer reserves the right to make modifications and improvements to the product.  
Therefore, the products shown in the illustrations and photographs may differ slightly from the actual state.*



## FO Termination Box

### PK SC-V2 simplex series

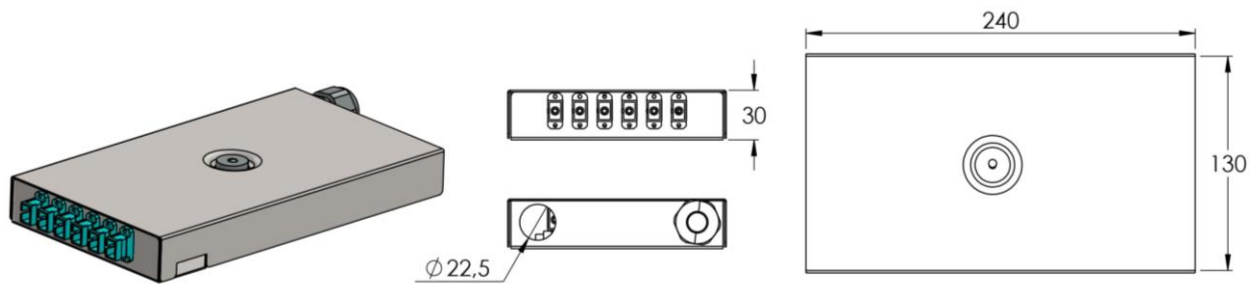
#### technical specifications:

PK-V2	6
dimensions [width x height x depth][mm]	130 x 30 x 240
number of SC simplex ports	6
connector standards	SC simplex, E2000 simplex, LC duplex
type of fiber splice cassette	KS-03-24
splice cassette capacity [F]	24
max. number of fiber splice cassettes	1
max. splice capacity [F]	24
recommended length of pigtails [m]	1 – 1.5
type of cable entry	1x PG13.5 cable gland 1x rubber grommet with membrane
diameter of cable entry [mm]	22.5
number of cable entries	2x rear
central strength member holder (FRP rod)	YES
mounting type	wall-mounted, inside a rack
temperature resistance [°C]	od -40 do +70
ingress protection degree IP	IP 41
impact protection degree IK	IK 10
flammability class	V0 acc. UL 94
weight [kg]	~0.8
material	powder painted Magnelis® sheet
available colors	RAL7035



## FO Termination Box PK SC-V2 simplex series

### technical drawings:



### order information:

CODE	DESCRIPTION
PK-V2-130/30/240-6-SCS-S-R7035	FO termination box PK-V2-130/30/240-6-SCS, 6 ports SC simplex, 1 splice cassette with cover, Magnelis®, structured, RAL7035