



## Fiber Optic Tube Divider Rail LRT series

Fiber optic tube divider rail designed for installation in 19" ODF cabinets and racks, allowing the installation of dividers.



### features:

- rail dedicated to mounting RT fiber optic tube dividers,
- the holes on the rail allow for the installation of up to 6 RT-12 dividers or up to 3 RT-24 dividers,
- possibility to mount on rear rack rails helps reduce the space occupied in the cabinet,
- Magnelis® sheet is the only metallic coating certified for use in a C5 environment, which provides durability and protection against corrosion.

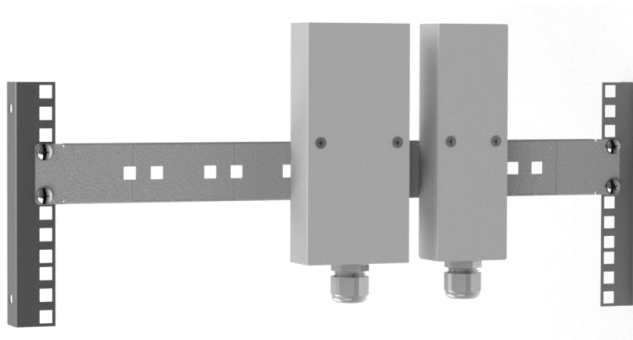
### elements of equipment:

- mounting kit (4x screws and cage nuts).

### standards and certificates:

- flammability class V0 acc. UL 94,
- PN-EN 60529 - ingress protection degree IP 41,
- PN-EN 62262 - impact protection degree IK 10,
- REACH Regulation No 1907/2006/EC,
- RoHS 2011/65/UE.

visualization of the closed LRT rail



visualization of the LRT rail with mounted fiber optic tube dividers

*The manufacturer reserves the right to make modifications and improvements to the product.  
Therefore, the products shown in the illustrations and photographs may differ slightly from the actual state.*



## Fiber Optic Tube Divider Rail

### LRT series

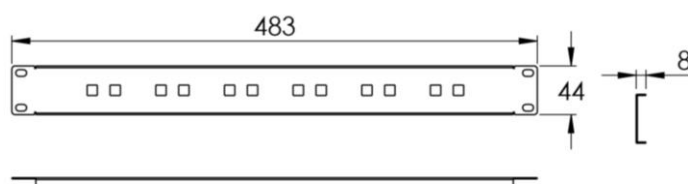
#### technical specifications:

LRT	1U
dimensions [width x height x depth][mm]	483 x 44 x 8
rack unit height [U]	1
max. number of dividers mounted on the LRT rail	6x RT-12 or 3x RT-24
mounting type	indoor, inside a rack
temperature resistance [°C]	from -40 to +70
impact protection degree IK	IK 10
flammability class	V0 acc. UL 94
weight [kg]	~0.2
material	powder painted Magnelis® sheet
available colors	RAL7035



## Fiber Optic Tube Divider Rail LRT series

### technical drawings:



### order information:

CODE	DESCRIPTION
LRT-19"-1U-G-R7035	Fiber optic tube divider rail LRT-19"-1U-R7035, 1U, capacity 6x RT-12 / 3x RT-24, 483x44x8mm (WxHxD), Magnelis®, smooth, RAL7035
RT-12-55/180/35-G-R7035	Fiber optic tube divider RT-12 for up to 12 line cable tubes, PG19, 55x180x35mm (WxHxD), Magnelis®, smooth, RAL7035
RT-24-80/180/35-G-R7035	Fiber optic tube divider RT-24 for up to 24 line cable tubes, PG19, 100x180x35mm (WxHxD), Magnelis®, smooth, RAL7035