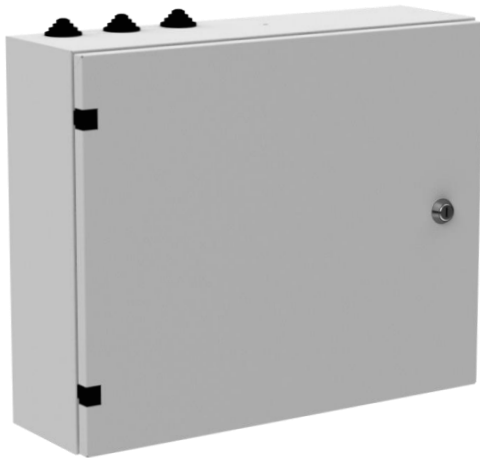


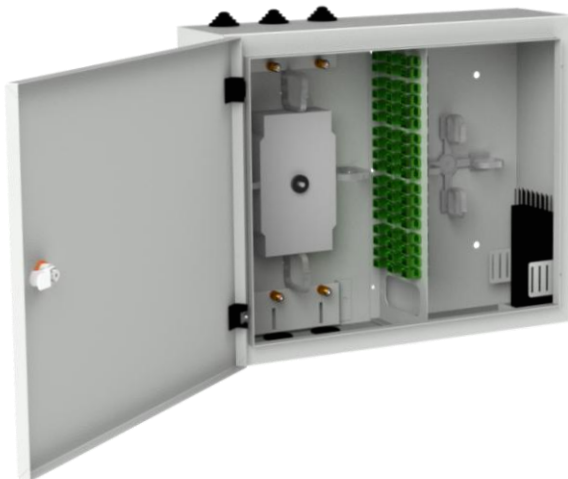


Optical Distribution Wall Box PSD series

A wall-mounted optical distribution box used in indoor FTTx access optical networks, mainly in multi-level buildings.



visualization of the closed PSD box



visualization of the open PSD box

features:

- optical distribution box provides a high-density wall mounted solution for fiber optic network inside the building, which aims to provide and manage fiber distribution in a limited space,
- provides connection for up to 48 subscriber lines,
- possibility of mounting connector standards: SC simplex, E2000 simplex, LC duplex,
- optical distribution box equipped with single doors locked with a key, key code depending on preferences can be repeatable or different,
- partition with a numbered commutation field separating the line section from the subscriber section,
- comes with dust proof cable entries on the top and bottom of the box,
- possibility of installation loose tube cables without having to disrupt the service (mid-span splicing),
- dedicated space for Black Box splitters with a management section or mini metal box installed on the splice cassette,
- Magnelis® sheet is the only metallic coating certified for use in a C5 environment, which provides durability and protection against corrosion.

standards and certificates:

- flammability class V0 acc. UL 94,
- PN-EN 60529 - ingress protection degree IP 41,
- PN-EN 62262 - impact protection degree IK 10,
- REACH Regulation No 1907/2006/EC,
- RoHS 2011/65/UE.

The manufacturer reserves the right to make modifications and improvements to the product. Therefore, the products shown in the illustrations and photographs may differ slightly from the actual state.



Optical Distribution Wall Box PSD series

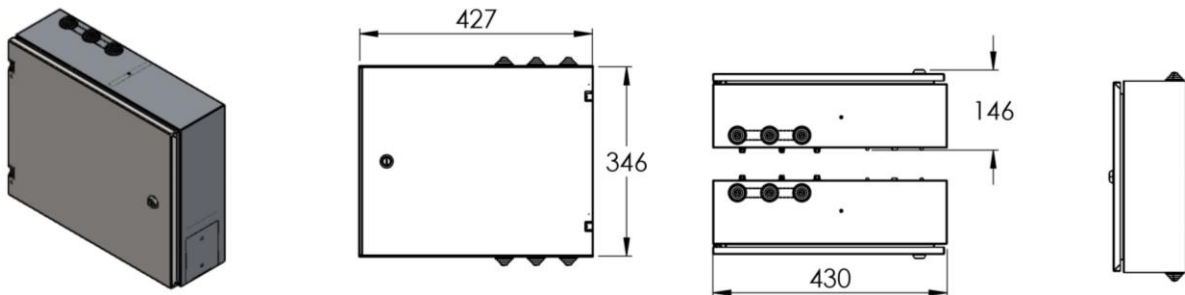
technical specifications:

PSD	48
dimensions [width x height x depth][mm]	430 x 350 x 130
number of linear SC simplex type commutation field	6
number of subscriber SC simplex type commutation field	48
connector standards	SC simplex, E2000 simplex, LC duplex
type of fiber splice cassette	KS-03-24
splice cassette capacity [F]	24
max. number of fiber splice cassettes	4
max. splice capacity [F]	96
recommended length of pigtails [m]	2 – 2.5
type of cable entry	stepped rubber grommet
diameter of cable entry [mm]	ø 32
number of cable entries	6 (3x top / 3x bottom)
mid-span access	YES
central strength member holder (FRP rod)	YES
mounting type	indoor, wall-mounted
temperature resistance [°C]	from -40 to +70
ingress protection degree IP	IP 41
impact protection degree IK	IK 10
flammability class	V0 acc. UL 94
weight [kg]	~1.3
material	powder painted Magnelis® sheet
available colors	RAL7035



Optical Distribution Wall Box PSD series

technical drawings:



order information:

CODE	DESCRIPTION
PSD-430/350/130-48-SCS-0K3-S-R7035	Optical distribution wall box PSD-430/350/130-48-SCS, indoor, single door, 48 ports SC simplex, without splice cassettes, 430x350x130mm (WxHxD), Magnelis®, structured, RAL7035
PSD-430/350/130-48-SCS-3K3-S-R7035	Optical distribution wall box PSD-430/350/130-48-SCS, indoor, single door, 48 ports SC simplex, 3 splice cassettes with cover, 430x350x130mm (WxHxD), Magnelis®, structured, RAL7035