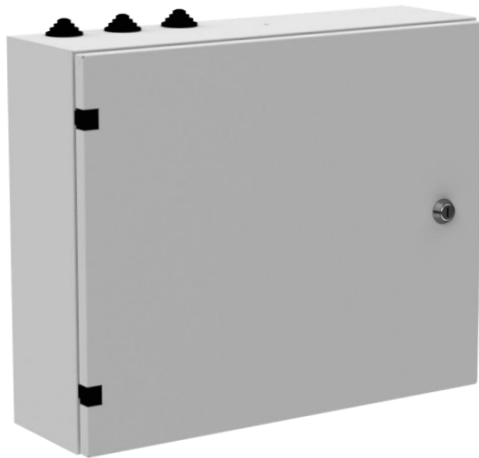


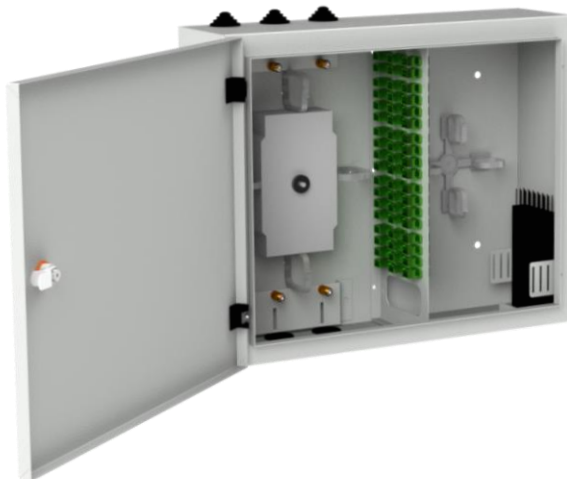


Optical Distribution Wall Box PSD series

A wall-mounted optical distribution box used in indoor FTTx access optical networks, mainly in multi-level buildings.



visualization of the closed PSD box



visualization of the open PSD box

features:

- optical distribution box provides a high-density wall mounted solution for fiber optic network inside the building, which aims to provide and manage fiber distribution in a limited space,
- provides connection for up to 48 subscriber lines,
- possibility of mounting connector standards: SC simplex, E2000 simplex, LC duplex,
- optical distribution box equipped with single doors locked with a key, key code depending on preferences can be repeatable or different,
- partition with a numbered commutation field separating the line section from the subscriber section,
- comes with dust proof cable entries on the top and bottom of the box,
- possibility of installation loose tube cables without having to disrupt the service (mid-span splicing),
- dedicated space for Black Box splitters with a management section or mini metal box installed on the splice cassette,
- Magnelis® sheet is the only metallic coating certified for use in a C5 environment, which provides durability and protection against corrosion.

elements of equipment:

- fiber splice cassettes (acc. to configuration),
- rubber grommets (acc. to configuration),
- velcro tapes,
- cable ties,
- mounting kit (4x wall anchors).

standards and certificates:

- flammability class V0 acc. UL 94,
- PN-EN 60529 - ingress protection degree IP 41,
- PN-EN 62262 - impact protection degree IK 10,
- REACH Regulation No 1907/2006/EC,
- RoHS 2011/65/UE.

*The manufacturer reserves the right to make modifications and improvements to the product.
Therefore, the products shown in the illustrations and photographs may differ slightly from the actual state.*



Optical Distribution Wall Box

PSD series

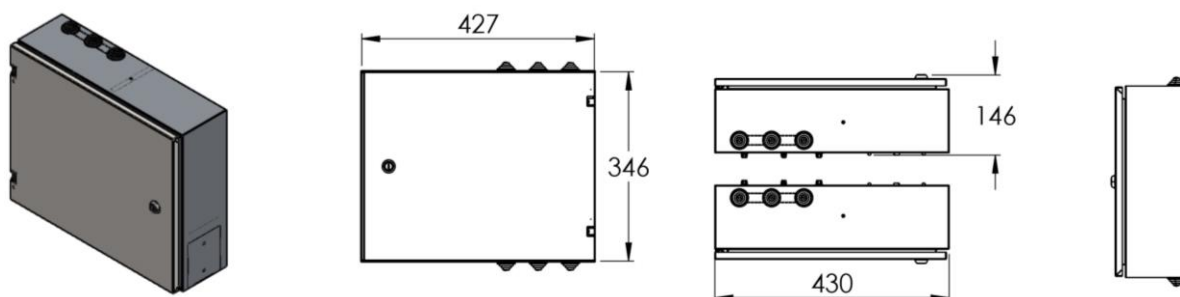
technical specifications:

PSD	48
dimensions [width x height x depth][mm]	430 x 350 x 130
number of linear SC simplex type commutation field	6
number of subscriber SC simplex type commutation field	48
connector standards	SC simplex, E2000 simplex, LC duplex
type of fiber splice cassette	KS-03-24
splice cassette capacity [F]	24
max. number of fiber splice cassettes	4
max. splice capacity [F]	96
recommended length of pigtails [m]	2 – 2.5
type of cable entry	stepped rubber grommet
diameter of cable entry [mm]	ø 32
number of cable entries	6 (3x top / 3x bottom)
mid-span access	YES
central strength member holder (FRP rod)	YES
mounting type	indoor, wall-mounted
temperature resistance [°C]	from -40 to +70
ingress protection degree IP	IP 41
impact protection degree IK	IK 10
flammability class	V0 acc. UL 94
weight [kg]	~1.3
material	powder painted Magnelis® sheet
available colors	RAL7035



Optical Distribution Wall Box PSD series

technical drawings:



order information:

CODE	DESCRIPTION
PSD-430/350/130-48-SCS-0K3-S-R7035	Optical distribution wall box PSD-430/350/130-48-SCS, indoor, single door, 48 ports SC simplex, without splice cassettes, 430x350x130mm (WxHxD), Magnelis®, structured, RAL7035
PSD-430/350/130-48-SCS-3K3-S-R7035	Optical distribution wall box PSD-430/350/130-48-SCS, indoor, single door, 48 ports SC simplex, 3 splice cassettes with cover, 430x350x130mm (WxHxD), Magnelis®, structured, RAL7035